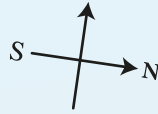


CAMP 1

OPEN SUMMER (DEC-JAN)

CAMP 2



CAMP ONE SITES

A Block Campsites

1-37, 41 Non-powered

B Block Campsites

28-33, 39, 40, 42-61 Powered

*All campsites minimum 8 x 8 metres.

KEY

- | | | | | | |
|------------------|----------------------|------------------------------|-----------------|----------------------------|------------------------------|
| T Toilets | K Kitchen | T Toilets Summer only | □ Accommodation | --- Frog Pond Track | ⊗ Dump Station |
| S Showers | H Hall | B Baby Bathroom | □ Skip | ~ Stream | AED AED Defibrillator |
| L Laundry | D Dining Room | F Fish cleaning area | ● Tap | i Fire Extinguisher | A Assembly Point |

(MAP NOT DRAWN TO SCALE)

CAMP TWO SITES

C Block Campsites

1-24 Powered

D Block Campsites

23-68 Powered

E Block Campsites

51-109 Non-powered

G Block Campsites

1-28 Non-powered

Bethany Village

2-56

*All camp sites minimum 8x8 metres

Welcome to Bethany Park, Kaiteriteri

Office hours: Summer 8am-8pm; Winter 9am-5pm. Any changes will be notified on our office door.

Arrivals & Departures: Site arrivals from 1pm, departure 11am. Accommodation arrivals from 2pm and departure 10am. Please note there are no refunds for early departures.

Vehicles: One vehicle may be parked on your site. ALL other motored vehicles (boats, jet skis, motorbikes) must be parked in designated areas with Green sticker.

Showers: Free.

Laundry: Washing machine \$4.00/load. Dryer \$4.00/load. Commercial non-fragrant wash liquid dispenses through wash cycle.

Wifi: Free. Locate **Bethany Hotspot**. Password: **bethanycam**

Fridges/Freezers: Please write your name, site, and departure date on all items. Remove when departing.

Recycling: We have a skip for rubbish, but please put all glass in the Bottle Bank on Camp 2. Recycling bins available at Kaiteriteri beach carpark.

BBQ's: There are free BBQ's near the kitchen facilities. Please leave them clean for the next guest. No fires over summer. Gas BBQ's only to be used on sites.

Emergencies: After hours phone 027 217 8205 for onsite staff. Call 111 for an ambulance or police. There is a LIFEPAK Defibrillator at the office.

Baby bath: Located in Camp 2 in shower block. Ask at office for access code.

Drinking water: All water from taps (except Dump station) is treated and suitable for drinking.

Fish cleaning: Available in Camp 1 and Boat Parking area in Camp 2.

We are a family-focused Park. Holidaying here includes consideration of your neighbours. Please be quiet on your site and throughout the camp from 10.30pm. Our security staff do have the right to enforce our rules.

Alcohol: We ask that if you have alcohol you drink it in the confines of your site/ cabin only. Please do not store it in the communal fridges. No underage drinking. Any drunken or unruly behaviour may result in your removal from Bethany Park without refund.

Smoking: Please do not smoke in or around buildings.

Speed: PLEASE drive at walking pace at all times.

Visitors: All visitors must report to reception for a Visitor car sticker. They must leave before 10.30pm.

Powered caravans: ALL caravans must have a current electrical WOF.

18-25 year olds: \$150.00 cash bond and a signed Young Adults' policy form per person is required at check-in if you are not part of a family group. Bond may be forfeited if camp rules are broken.

Pets: Dogs on leash permitted after Waitangi weekend to 15 December. Not in accommodation please.

Vacant sites: Please do not park on these! Thank you!

ACTIVITIES & LOCAL WALKING TRACKS

Paddock Golf & Badminton: Inquire at office. \$5.00 per person or \$15.00 per family. Volley balls available at office, with a \$5.00 cash bond.

Outdoor table tennis: Located beside children's playground on Camp 2. Balls available at office, \$1.00 each.

Kaiteriteri Mountain Bike Park: Entrance along Martin Farm Road. Maps available at office, also on the website www.bikekaiteriteri.co.nz

Glow Worms@Night: Walk up to Kimi Ora Resort, on right of their reception is a sign to Glow worms, take a torch.

Children's BMX track: See camp map for location.

Loop Track: A shady, easy 20-minute bush walk. Start opposite Bethany Village, see site map.

Estuary Walkway: 100 metres from our entrance, on left over bridge, veer right following sign to Beach & Shop. 20-minute walk.

Walk to Beach: 15-minute stroll along Martin Farm road to Kaiteriteri Beach and Waterfront café and Store.

Kaiteri walk to Stephens Bay: Walk to Little Kaiteriteri, continue along beach and uphill following track to Stephens Bay. Great swimming beaches and lookout points. 50-minute return walk.

Kaiteriteri Store: A general store selling most things! Open 8am-5.30pm winter and open every day 8am-8pm in summer. **Waterfront** is open every day in summer.

Beached Whale Restaurant and Bar: 10 Inlet Road, open every day in summer, 5pm-late. Phone: 527 8114.



Bethany Park

KAITERITERI

88 Martin Farm Road, Kaiteriteri
Ph: 03 527 8014
E: lovetostay@bethanypark.co.nz
www.bethanypark.co.nz